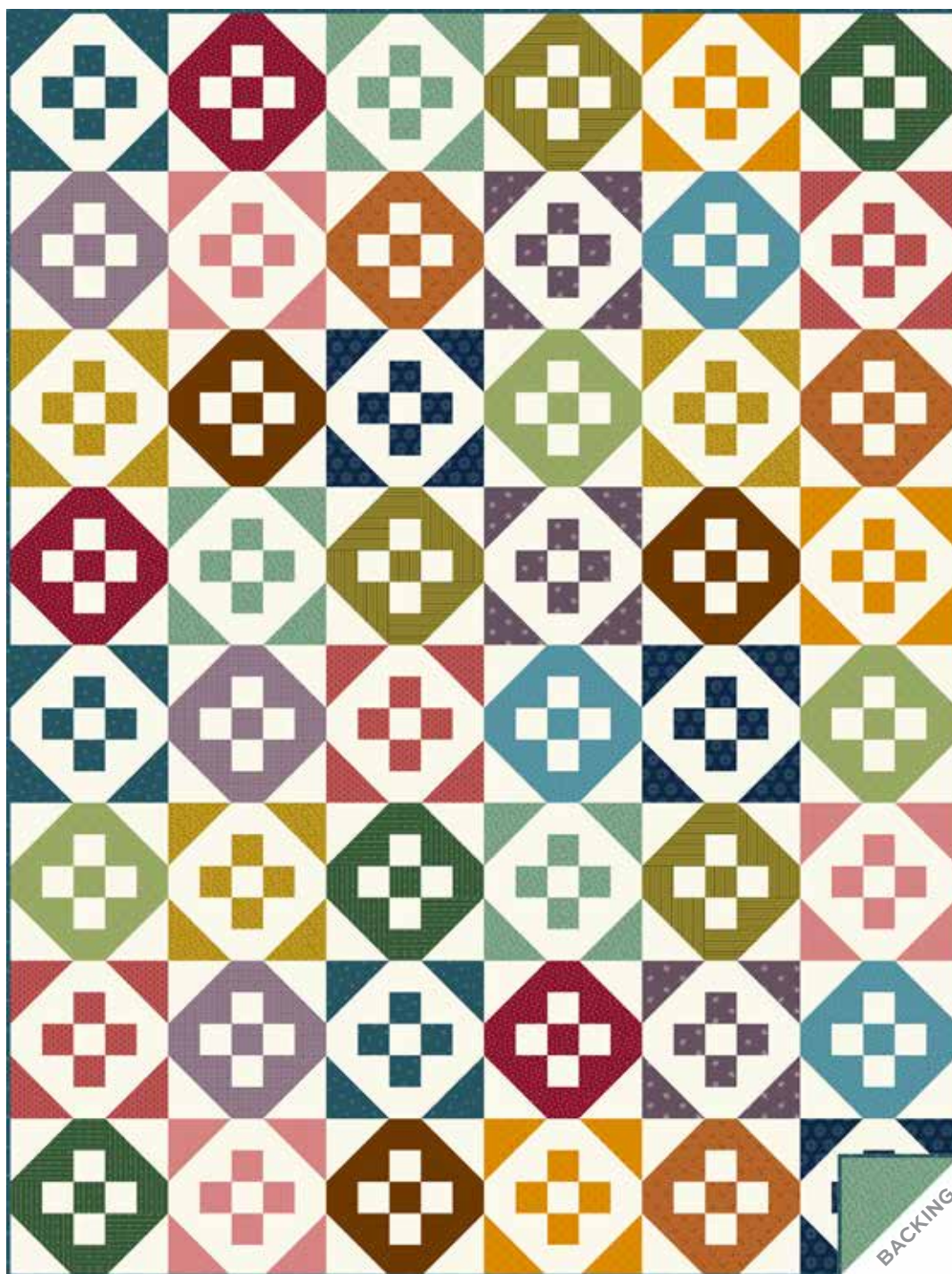


# Little Gems

ANDOVER FABRICS



Patchwork Plus Quilt designed by: **Janet Houts**

Quilt Size: **60" x 80"** • Skill Level: **Beginner**

# Patchwork Plus Quilt

Introducing Andover Fabrics new collection: **LITTLE GEMS** by Andover Fabrics

Quilt designed by Janet Houts • Quilt finishes 60" x 80" • 48 Blocks: 10" x 10"

*This simple two-block design uses the placement of light and dark fabrics to make a checkerboard effect. The variety of subtle tone-on-tone prints, including some stripes, adds textural interest. Easy enough for a beginning quilter with a little sewing experience.*

## Cutting Directions

**Note:** Read assembly directions before cutting patches. All measurements are cut sizes and include ¼" seam allowances. A fat ¼ is an 18" x 20"-22" cut. WOF designates the width of fabric from selvedge to selvedge (approximately 42" wide).

*Read Step 1 before cutting patches.*

### Cutting for ONE Block Y:

Fabric A

Cut (2) squares 4<sup>7</sup>/<sub>8</sub>", cut in half diagonally to make 4 half-square triangles

Cut (5) squares 2<sup>1</sup>/<sub>2</sub>"

Bright Print:

Cut (2) squares 4<sup>7</sup>/<sub>8</sub>", cut in half diagonally to make 4 half-square triangles

Cut (4) squares 2<sup>1</sup>/<sub>2</sub>"

### Cutting for ONE Block Z:

Fabric A

Cut (2) squares 4<sup>7</sup>/<sub>8</sub>", cut in half diagonally to make 4 half-square triangles

Cut (4) squares 2<sup>1</sup>/<sub>2</sub>"

Bright Print:

Cut (2) squares 4<sup>7</sup>/<sub>8</sub>", cut in half diagonally to make 4 half-square triangles

Cut (5) squares 2<sup>1</sup>/<sub>2</sub>"

## Making the Quilt

1. Each bright fabric is used in 3 Block Y or 3 Block Z. Note the color placement in the Quilt Assembly and quilt photograph, or decide for yourself which fabrics you want in each kind of block. Cut the number of patches as listed above for each Block Y or Block Z.
2. Join a Fabric A half-square triangle with a bright half-square triangle to make a square. Press the seam allowance toward the bright triangle. The square should measure 4<sup>1</sup>/<sub>2</sub>". If it does not, adjust your stitching and pressing techniques. Repeat this step to join each bright triangle to a Fabric A triangle. You will have 12 pieced squares in each color. Set aside.
3. Referring to the Block Piecing diagrams, sew bright 2<sup>1</sup>/<sub>2</sub>" squares to Fabric A 2<sup>1</sup>/<sub>2</sub>" squares to make the pieced units at the center top and bottom of a block. Make the middle row of each block with 2 bright squares and 3 Fabric A squares for Block Y, or with 3 bright squares and 2 Fabric A squares for Block Z. Arrange these units with 4 pieced squares from Step 1 to make a block. Stand back to be certain that all the patches are oriented correctly. Once you are satisfied, join the parts into 3 rows, and then join the rows. Make a total of 24 Block Y and 24 Block Z.

## Fabric Requirements

Fabric A	blocks	Yardage	Fabric
<b>16 Prints</b>	blocks	3 yards	CS-10-Snow
		fat ¼ each	
1259-G	1260-R	1261-G	1262-B
1263-E	1264-V	1265-Y	1266-N
1267-T	1268-P	1269-R	1270-Y
1271-T	1272-O	1273-T	1274-P
<b>Binding</b>		5/8 yard	1273-T
<b>Backing</b>		5 yards	1271-T

### Cutting for entire quilt:

Cut (96) squares 4<sup>7</sup>/<sub>8</sub>", cut in half diagonally to make 192 half-square triangles

Cut (216) squares 2<sup>1</sup>/<sub>2</sub>"

**8 Prints** From each for 3 Block Y:

Cut (6) squares 4<sup>7</sup>/<sub>8</sub>", cut in half diagonally to make 12 half-square triangles

Cut (12) squares 2<sup>1</sup>/<sub>2</sub>"

**8 Prints** From each for 3 Block Z:

Cut (6) squares 4<sup>7</sup>/<sub>8</sub>", cut in half diagonally to make 12 half-square triangles

Cut (15) squares 2<sup>1</sup>/<sub>2</sub>"

### Binding

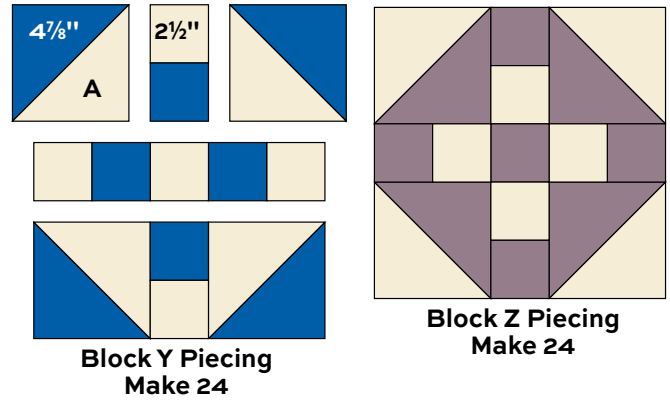
Cut (8) strips 2<sup>1</sup>/<sub>2</sub>" x WOF for binding

### Backing

Cut (2) lengths 35" x 90", pieced to fit quilt top with overlap on all sides

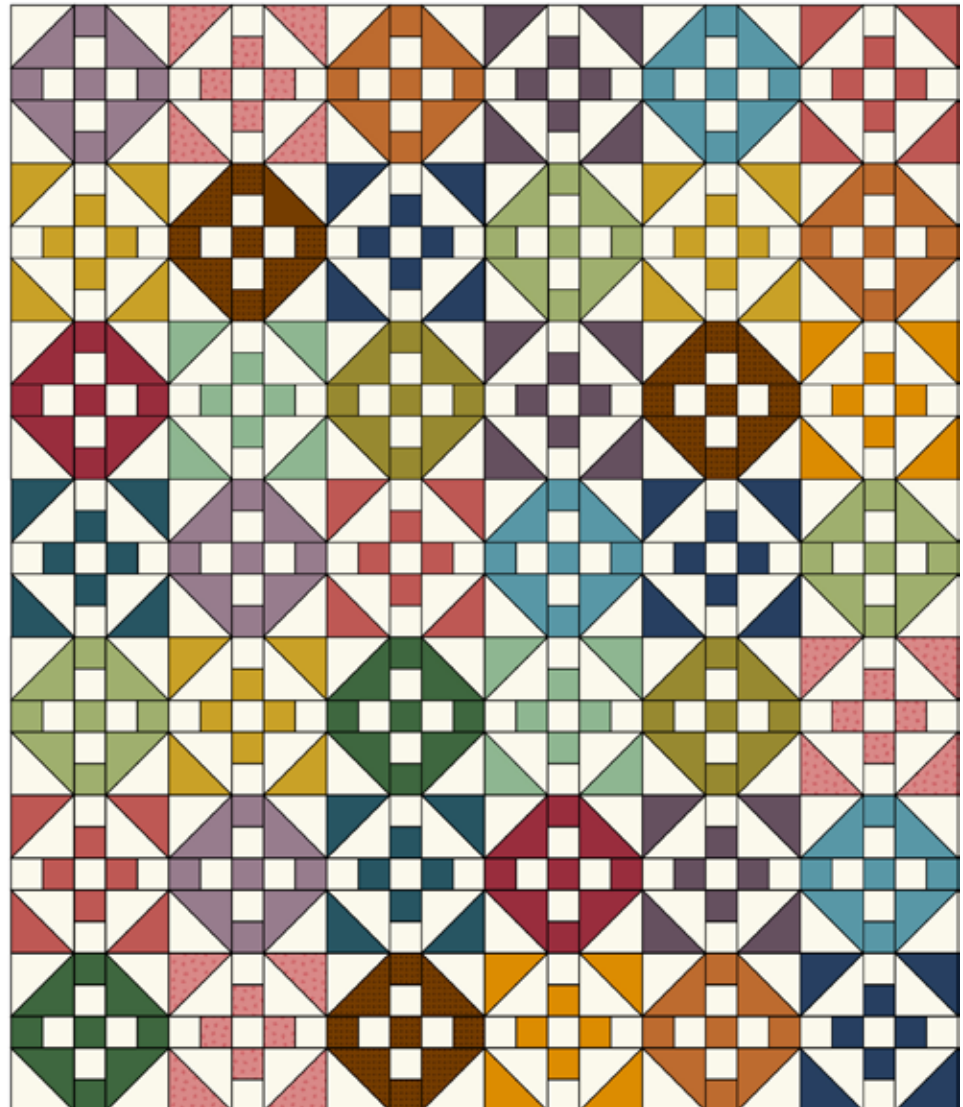
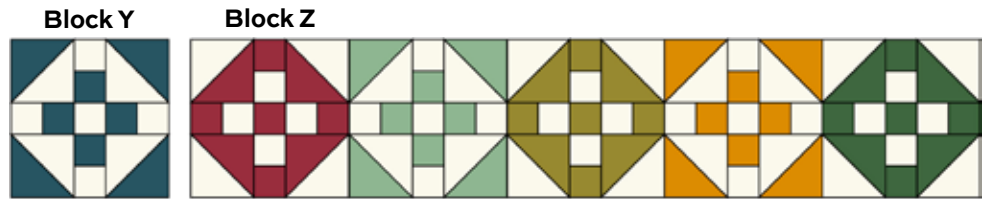
# Patchwork Plus Quilt

4. Referring to the Quilt Assembly, position the blocks in 8 rows of 6 blocks each, alternating Blocks Y and Z as shown. Follow the quilt diagram or arrange the blocks as you choose. Look through a camera or wrong end of binoculars to be certain that the blocks alternate to make the overall design. When you are satisfied, join the blocks into rows. Press seam allowances in opposite directions in alternating rows. Finally, join the rows.



## Finishing the Quilt

5. Layer the quilt with batting and backing and baste. Quilt in the ditch around patches. Or, quilt an overall pattern. Bind to finish the quilt.



Quilt Assembly

# Little Gems ANDOVER FABRICS



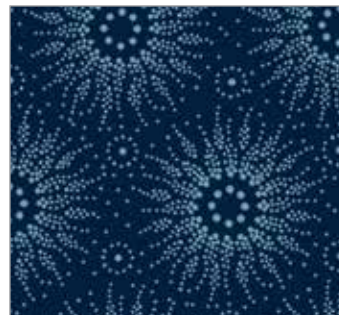
1259-G



1260-R



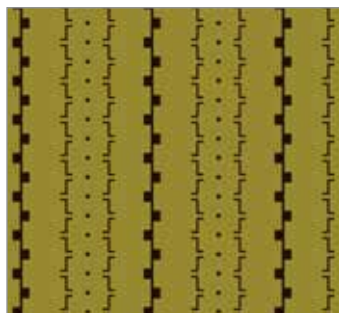
1261-G



1262-B



1263-E



1264-V



1265-Y



1266-N



1267-T



1268-P



1269-R



1270-Y



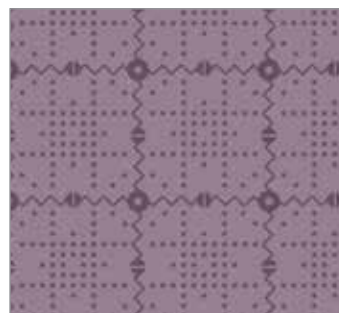
1271-T



1272-O



1273-T



1274-P

Additional fabric from **CENTURY SOLIDS**  
by Andover Fabrics



CS-10-SNOW

Free Pattern Download Available

1384 Broadway, 24th Floor, New York, NY 10018

Tel. (800) 223-5678 • [andoverfabrics.com](http://andoverfabrics.com)

All fabrics are used in quilt pattern.  
Fabrics shown are 100% of actual size.